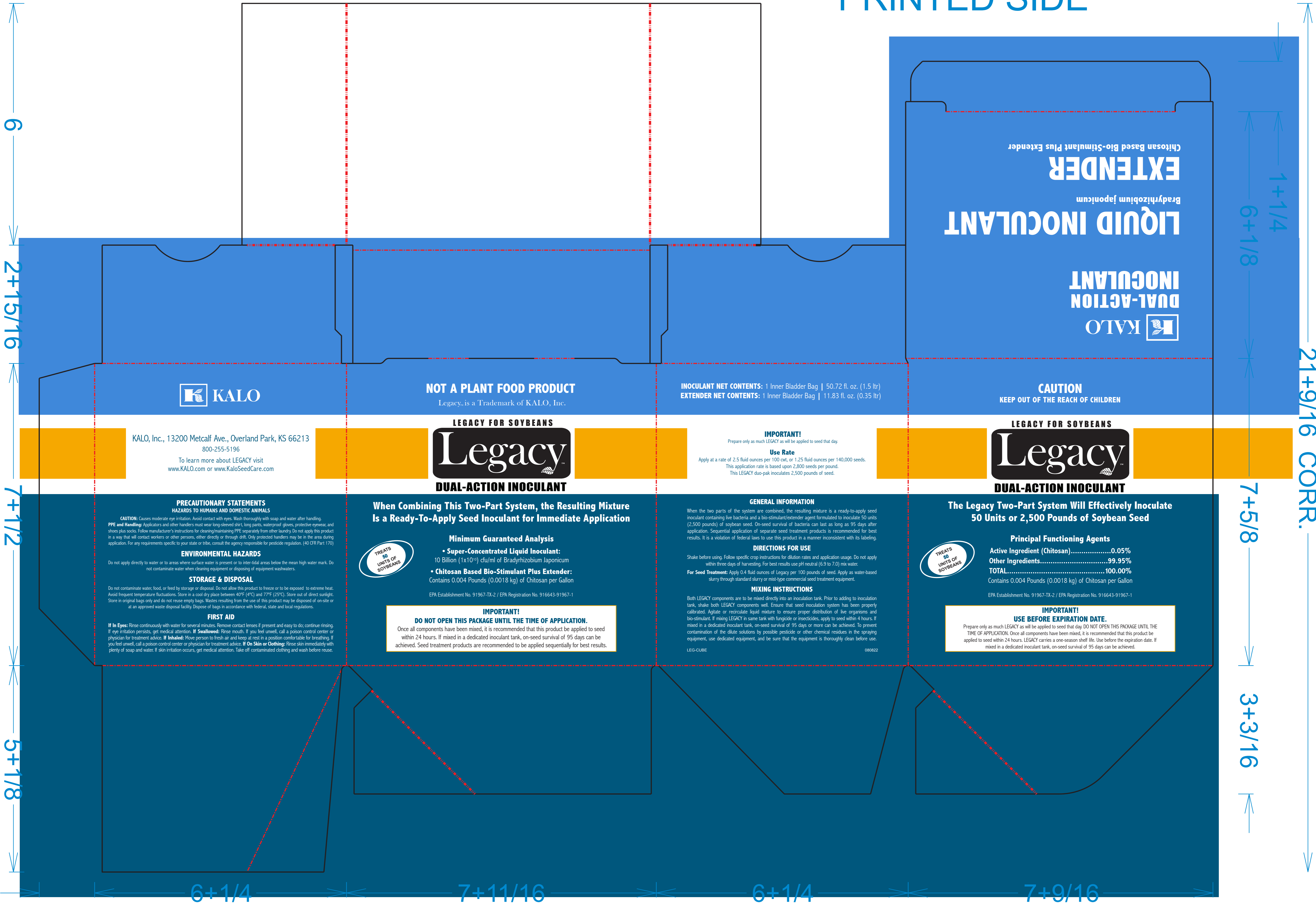


29+1/8

PRINTED SIDE



6

2+15/16

7+1/2

5+1/8

1+3/8

6+1/4

7+11/16

6+1/4

7+9/16

LEAD EDGE

21+9/16 CORR.

1+1/4

6+1/8

7+5/8

3+3/16

Chitosan Based Bio-Stimulant Plus Extender

EXTENDER

Bradyrhizobium japonicum

LIQUID INOCULANT

DUAL-ACTION INOCULANT

KALO



NOT A PLANT FOOD PRODUCT  
Legacy is a Trademark of KALO, Inc.

INOCULANT NET CONTENTS: 1 Inner Bladder Bag | 50.72 fl. oz. (1.5 ltr)  
EXTENDER NET CONTENTS: 1 Inner Bladder Bag | 11.83 fl. oz. (0.35 ltr)

CAUTION  
KEEP OUT OF THE REACH OF CHILDREN

KALO, Inc., 13200 Metcalf Ave., Overland Park, KS 66213  
800-255-5196  
To learn more about LEGACY visit  
www.KALO.com or www.KaloSeedCare.com

LEGACY FOR SOYBEANS  
**Legacy**  
DUAL-ACTION INOCULANT

**IMPORTANT!**  
Prepare only as much LEGACY as will be applied to seed that day.  
**Use Rate**  
Apply at a rate of 2.5 fluid ounces per 100 cwt, or 1.25 fluid ounces per 140,000 seeds.  
This application rate is based upon 2,800 seeds per pound.  
This LEGACY duo-pak inoculates 2,500 pounds of seed.

LEGACY FOR SOYBEANS  
**Legacy**  
DUAL-ACTION INOCULANT

**PRECAUTIONARY STATEMENTS**  
HAZARDS TO HUMANS AND DOMESTIC ANIMALS  
**CAUTION:** Causes moderate eye irritation. Avoid contact with eyes. Wash thoroughly with soap and water after handling.  
**PPE and Handing:** Applicators and other handlers must wear long-sleeved shirt, long pants, waterproof gloves, protective eyewear, and shoes plus socks. Follow manufacturer's instructions for cleaning/maintaining PPE separately from other laundry. Do not apply this product in a way that will contact workers or other persons, either directly or through drift. Only protected handlers may be in the area during application. For any requirements specific to your state or tribe, consult the agency responsible for pesticide regulation, (40 CFR Part 170)  
**ENVIRONMENTAL HAZARDS**  
Do not apply directly to water or to areas where surface water is present or to inter-tidal areas below the mean high water mark. Do not contaminate water when cleaning equipment or disposing of equipment washwaters.  
**STORAGE & DISPOSAL**  
Do not contaminate water, food, or feed by storage or disposal. Do not allow this product to freeze or to be exposed to extreme heat. Avoid frequent temperature fluctuations. Store in a cool dry place between 40°F (4°C) and 77°F (25°C). Store out of direct sunlight. Store in original bags only and do not reuse empty bags. Wastes resulting from the use of this product may be disposed of on-site or at an approved waste disposal facility. Dispose of bags in accordance with federal, state and local regulations.  
**FIRST AID**  
**If In Eyes:** Rinse continuously with water for several minutes. Remove contact lenses if present and easy to do, continue rinsing. If eye irritation persists, get medical attention. **If Swallowed:** Rinse mouth. If you feel unwell, call a poison control center or physician for treatment advice. **If Inhaled:** Move person to fresh air and keep at rest in a position comfortable for breathing. If you feel unwell, call a poison control center or physician for treatment advice. **If On Skin or Clothing:** Rinse skin immediately with plenty of soap and water. If skin irritation occurs, get medical attention. Take off contaminated clothing and wash before reuse.

**When Combining This Two-Part System, the Resulting Mixture Is a Ready-To-Apply Seed Inoculant for Immediate Application**



**Minimum Guaranteed Analysis**  
• **Super-Concentrated Liquid Inoculant:**  
10 Billion (1x10<sup>10</sup>) cfu/ml of Bradyrhizobium Japonicum  
• **Chitosan Based Bio-Stimulant Plus Extender:**  
Contains 0.004 Pounds (0.0018 kg) of Chitosan per Gallon

**IMPORTANT!**  
**DO NOT OPEN THIS PACKAGE UNTIL THE TIME OF APPLICATION.**  
Once all components have been mixed, it is recommended that this product be applied to seed within 24 hours. If mixed in a dedicated inoculant tank, on-seed survival of 95 days can be achieved. Seed treatment products are recommended to be applied sequentially for best results.

**GENERAL INFORMATION**  
When the two parts of the system are combined, the resulting mixture is a ready-to-apply seed inoculant containing live bacteria and a bio-stimulant/extender agent formulated to inoculate 50 units (2,500 pounds) of soybean seed. On-seed survival of bacteria can last as long as 95 days after application. Sequential application of separate seed treatment products is recommended for best results. It is a violation of federal laws to use this product in a manner inconsistent with its labeling.  
**DIRECTIONS FOR USE**  
Shake before using. Follow specific crop instructions for dilution rates and application usage. Do not apply within three days of harvesting. For best results use pH neutral (6.9 to 7.0) mix water.  
**For Seed Treatment:** Apply 0.4 fluid ounces of Legacy per 100 pounds of seed. Apply as water-based slurry through standard slurry or mist-type commercial seed treatment equipment.  
**MIXING INSTRUCTIONS**  
Both LEGACY components are to be mixed directly into an inoculation tank. Prior to adding to inoculation tank, shake both LEGACY components well. Ensure that seed inoculation system has been properly calibrated. Agitate or recirculate liquid mixture to ensure proper distribution of live organisms and bio-stimulant. If mixing LEGACY in same tank with fungicide or insecticides, apply to seed within 4 hours. If mixed in a dedicated inoculant tank, on-seed survival of 95 days or more can be achieved. To prevent contamination of the dilute solutions by possible pesticide or other chemical residues in the spraying equipment, use dedicated equipment, and be sure that the equipment is thoroughly clean before use.  
LEG-CUBE 080822



**The Legacy Two-Part System Will Effectively Inoculate 50 Units or 2,500 Pounds of Soybean Seed**

**Principal Functioning Agents**  
Active Ingredient (Chitosan).....0.05%  
Other Ingredients.....99.95%  
**TOTAL**.....100.00%  
Contains 0.004 Pounds (0.0018 kg) of Chitosan per Gallon

**IMPORTANT!**  
**USE BEFORE EXPIRATION DATE.**  
Prepare only as much LEGACY as will be applied to seed that day. **DO NOT OPEN THIS PACKAGE UNTIL THE TIME OF APPLICATION.** Once all components have been mixed, it is recommended that this product be applied to seed within 24 hours. LEGACY carries a one-season shelf life. Use before the expiration date. If mixed in a dedicated inoculant tank, on-seed survival of 95 days can be achieved.

EPA Establishment No. 91967-TX-2 / EPA Registration No. 916643-91967-1

EPA Establishment No. 91967-TX-2 / EPA Registration No. 916643-91967-1