

imPRESS™

PATENT PENDING

REDUCE DUST-OFF & IMPROVE SEED FLOW



IMPROVES SEED TREATMENT COVERAGE & REDUCES DUST-OFF

IMPRESS Is Labeled For
Use On Cereals* Such As:

Wheat•Barley•Oats•Rye•Triticale

*The initial release of this product is for use on cereals only. IMPRESS has been fully tested and approved for use on cereals and validated to be safe for use on these crops.

IMPRESS KEEPS MORE
PRODUCT ON THE SEED!

- Improved Opportunity for Performance
- Less Worker Exposure to Treatment Dust
- Better Environmental Stewardship

Standard Pre-Mix Wheat Seed Treatment



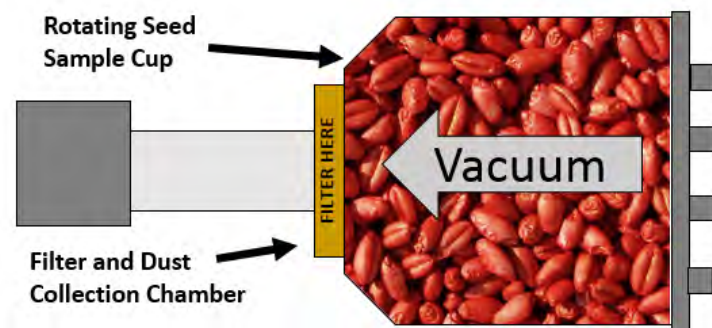
WITHOUT IMPRESS

WITH IMPRESS

Seed Treated with
IMPRESS looks and
flows better with much
less fugitive dust during
handling and planting.

DUST-OFF TESTING METHOD

Seed samples are tumbled under vacuum;
a filter catches dust that escapes the seed.
Residue collected on the filters IS analyzed for
levels of active ingredient captured.



PROVEN DUST-OFF PERFORMANCE

Dust Collected on Test Filters



TEST RESULTS	IMPRESS REDUCED DUST-OFF OF ACTIVE INGREDIENTS BY:
WHEAT:	97.0%
OATS:	93.3%
BARLEY (hulled):	82.4%
BARLEY (hulless):	80.4%
Seed treatments with IMPRESS substantially REDUCED SUSCEPTIBILITY TO DUST-OFF!	

Improves Treatment Coverage, Reduces Dust-Off
and Increases Color Intensity

imPRESS
With Color Infusion



imPRESS iR
IMPRESS iR is infused with a red colorant.

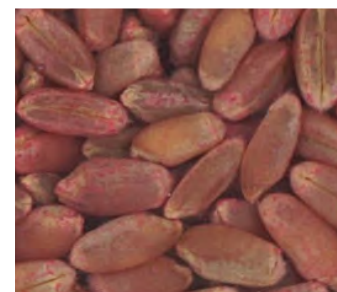


imPRESS



imPRESS iP
IMPRESS iP is infused with a purple colorant.

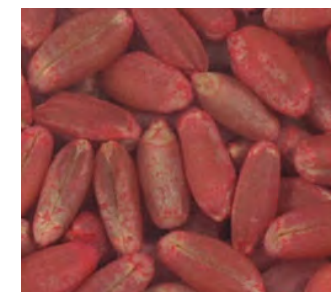
ADDED COLOR AND VALUE WITH COLOR-INFUSED IMPRESS*



Premixed Red Fungicide/
Insecticide **WITHOUT** IMPRESS iR

COLOR & COVERAGE

Color-infused IMPRESS iR enhances the
color intensity of pre-colored seed treatments.
Use IMPRESS iR as a convenient color and
coverage additive with tank-mixed cereal seed
treatments requiring the addition of a colorant.



Premixed Red Fungicide/
Insecticide **WITH** IMPRESS iR

*Rates should be adjusted to obtain the desired coverage and performance based upon the seed
size, seed coat, total slurry mix volume, and seed treatment application equipment.*

IMPRESS SUGGESTED USE RATE WITH PRE-COLORED SEED TREATMENTS:	0.75 - 1.0 oz. per 100 lbs of seed.
IMPRESS iR SUGGESTED USE RATE WITH PRE-COLORED SEED TREATMENTS:	1.5 - 1.75 oz. per 100 lbs of seed.
IMPRESS iR SUGGESTED USE RATE WITH TREATMENTS REQUIRING THE ADDITION OF A COLORANT:	2.0 - 2.25 oz. per 100 lbs of seed.
IMPRESS iP SUGGESTED USE RATE WITH PRE-COLORED SEED TREATMENTS:	1.25 - 1.5 oz. per 100 lbs of seed.
IMPRESS iP SUGGESTED USE RATE WITH TREATMENTS REQUIRING THE ADDITION OF A COLORANT:	1.75 - 2.0 oz. per 100 lbs of seed.

*IMPRESS, IMPRESS iR, and IMPRESS iP are NOT available for distribution in the states of ID, MT, OR, UT, WA and Western WY.
Contact KALO (sales@kalo.com) for more information.